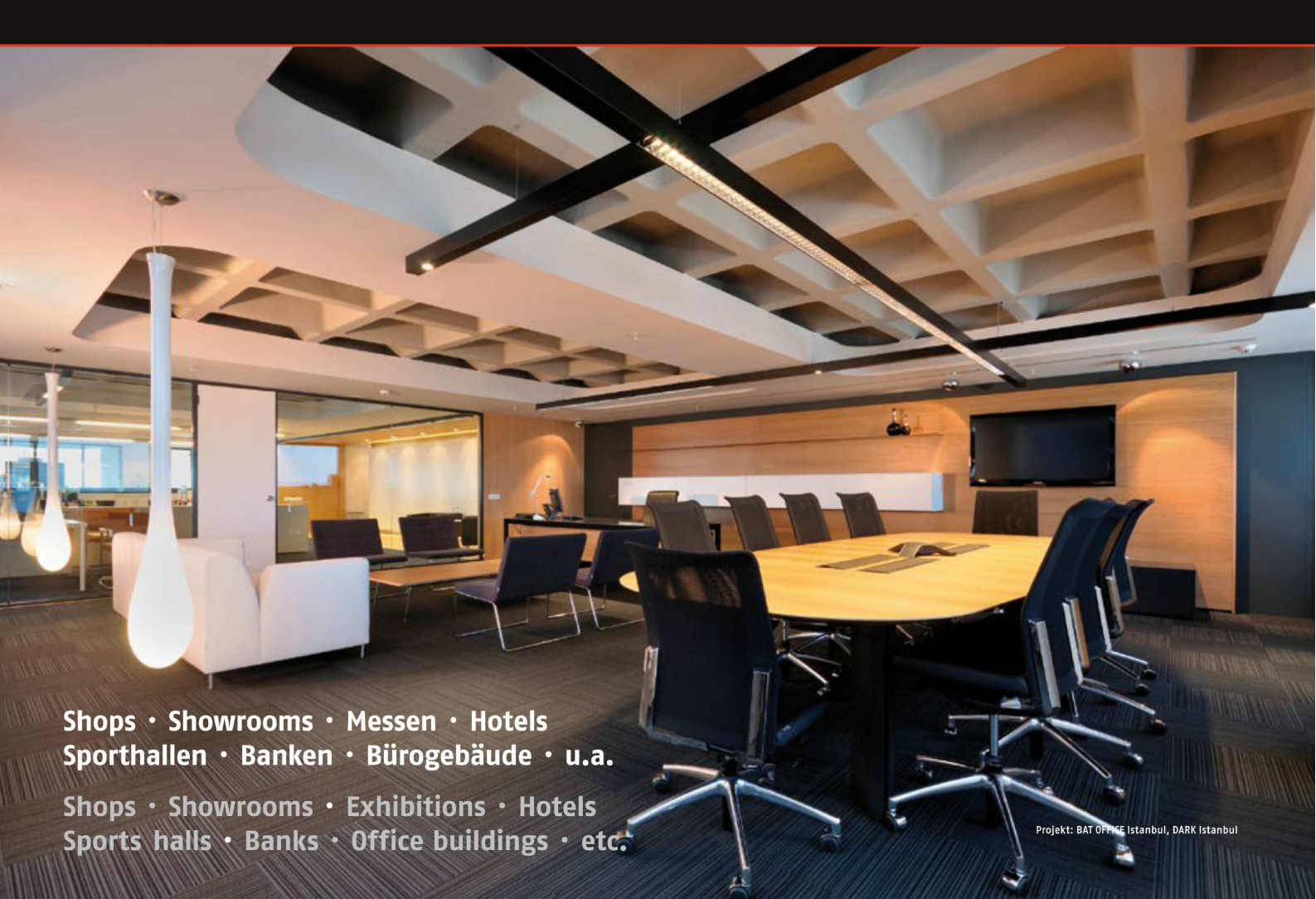


Portfolio '12





**Shops · Showrooms · Messen · Hotels
Sporthallen · Banken · Bürogebäude · u.a.**

**Shops · Showrooms · Exhibitions · Hotels
Sports halls · Banks · Office buildings · etc.**

Projekt: BAT OFFICE Istanbul, DARK Istanbul



LTS Licht & Leuchten GmbH produziert auf hohem technischen Qualitätsniveau Leuchten und Lichtsysteme für professionelle Anwendungsbereiche.

LTS Light & Luminaires manufactures luminaires and lighting systems for professional applications on a technically superior standard.

**Qualität. Innovation. Design.
Flexibilität. Zuverlässigkeit.
Atmosphäre.**

**Quality. Innovation. Design.
Flexibility. Reliability.
Atmosphere.**

LTS Licht & Leuchten GmbH beschäftigt an zwei Standorten in Tettng über 200 Mitarbeiter. Der ständige Ausbau der Standorte sichert den Innovations- und Qualitätsvorsprung.

To ensure leading innovation and quality, the two manufacturing companies in Tettng, have continued to expand their facilities, where there are over 200 employees.



Screen LED Pure | quadratisch square

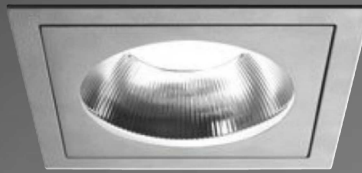


Screen LED Pure | rund round



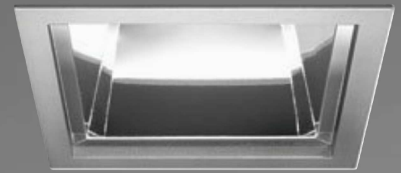
Scene® 1

Scene® 1 LED



◇ 151 × 151 mm

Scene® 1 LED



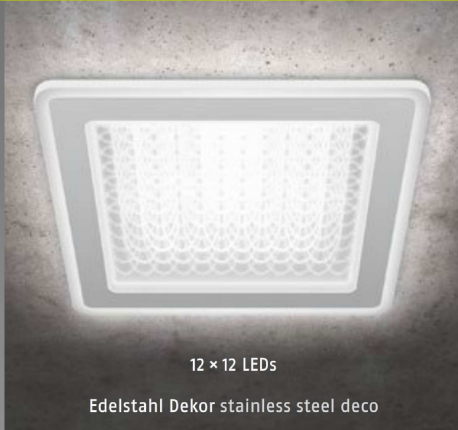
Scene® 1 LED





12 × 12 LEDs

⌀ 350 mm



12 × 12 LEDs

Edelstahl Dekor stainless steel deco

Screen LED Dekor



LED

Screen

6 × 6 LEDs

◇ 160 × 160 mm

Screen LED Pure | Aufbau Surface-mounted



∅ 115 mm

CSA LED 40

engstrahlend narrow beam angle



CSA LED 40

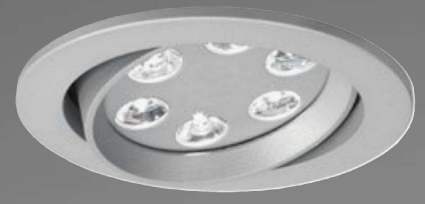
breitstrahlend wide beam angle



∅ 134 mm

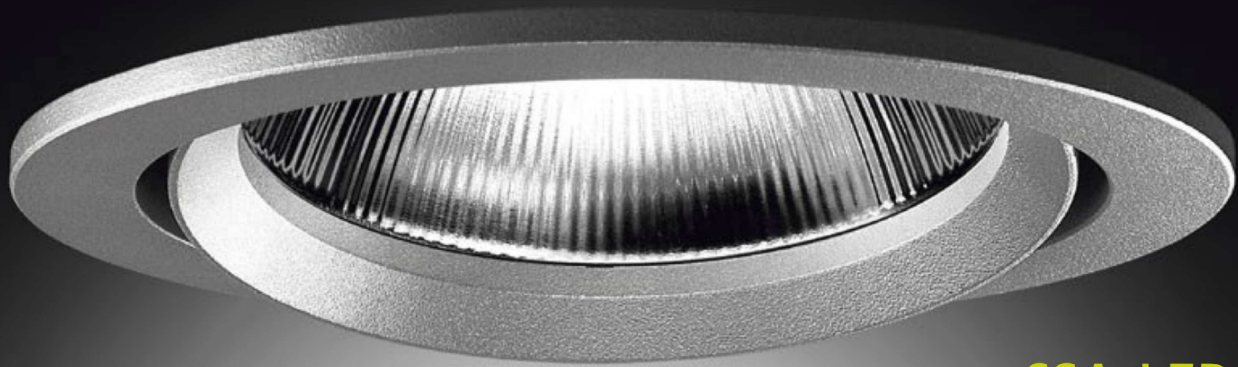
CSA LED 60

engstrahlend narrow beam angle



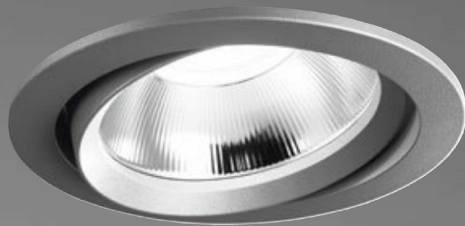
CSA LED 60

breitstrahlend wide beam angle



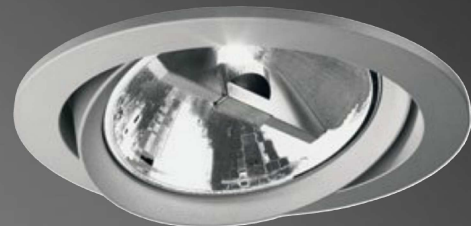
LED

CSA LED



∅ 163 mm

CSA LED 65



CSA LED 65 | LED AR111



Edel + Stahl

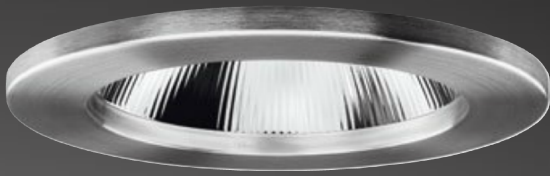


∅ 197 mm

EC LED 35



EC LED 30/40

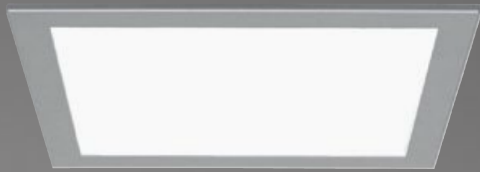


∅ 145 mm

EC LED 10/13



EC LED 12



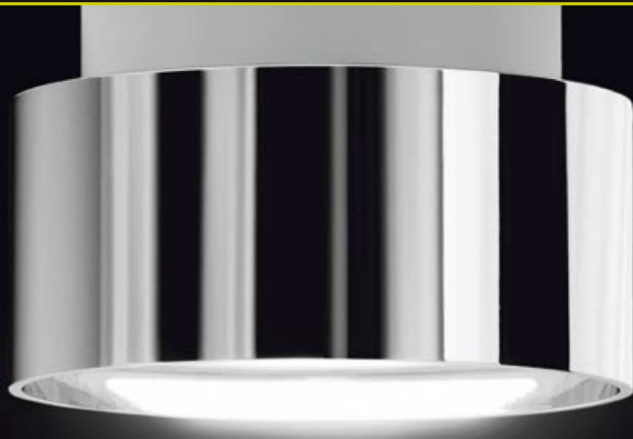
▧ 166 × 166 mm

Piazza 200



Piazza 210





LED

CA LED



SCT LED 200



TRI LED 20/21

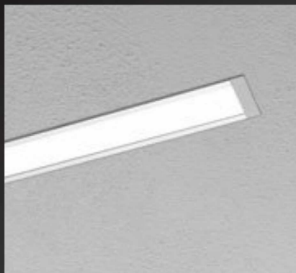


Ø 130 mm

CA LED 10



LKLED 31



LKLED 32



LKLED 35

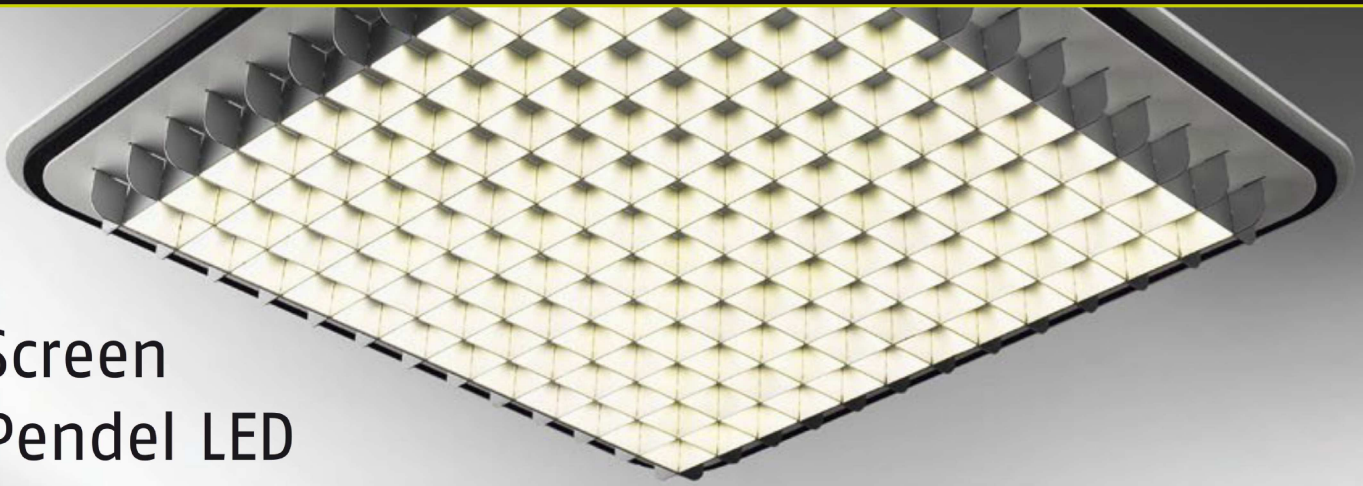


Lichtkanal 30

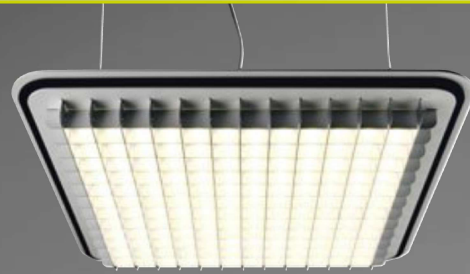
LED

Der Lichtkanal 35 ist begehbar
und speziell für Fliesen geeignet.
Lichtkanal 35 is walkable and
especially suitable for tiles.

Screen Pendel LED



Screen Pendel LED



◇ 260 × 260 mm

Screen Pendel LED | Detail



Poox 510



Poox LED

LED

Skate



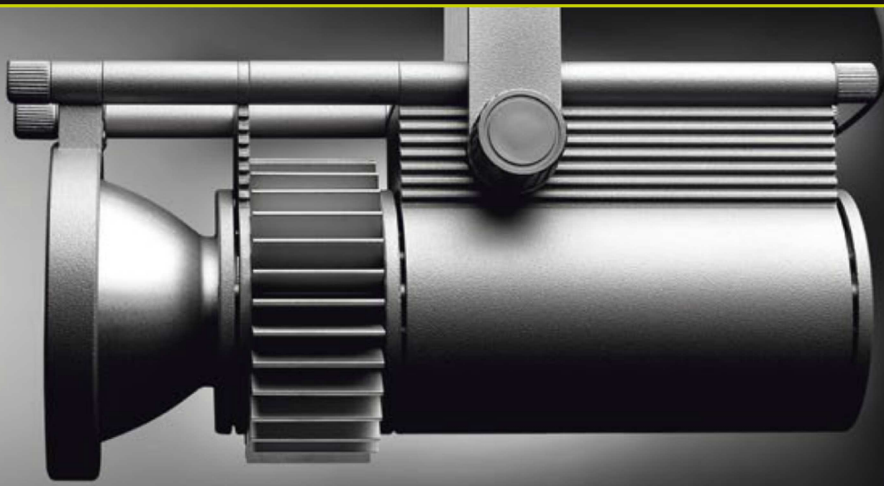
Skate



PX Futura



MX LED 200



LED

S 100 LED



MX LED 300



S 100 LED

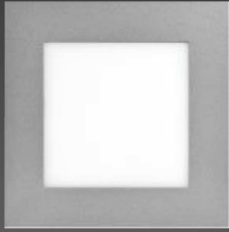


PX LED



Salto | Filou | Clipo

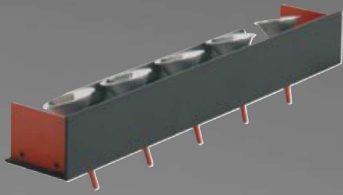




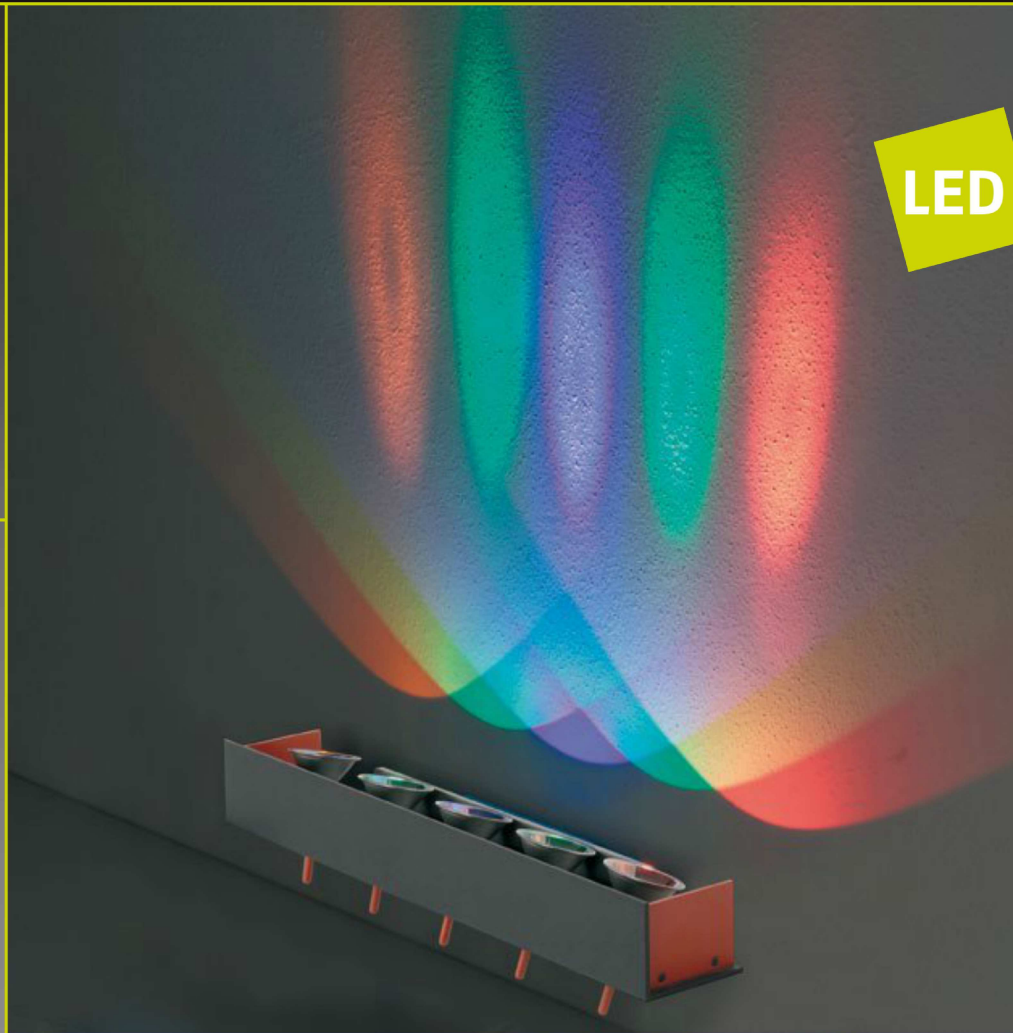
◇ 109 × 109 mm

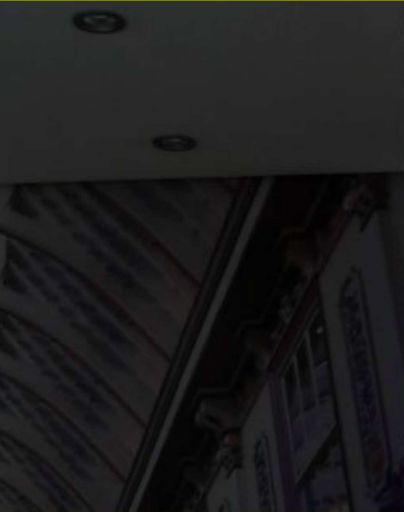
Piazza 110

LED



WLED 200







LED

Spike



∅ 140 mm

BELED 140

∅ 220 mm

BELED 220



Projekt: Mercedes-Benz, Kundencenter, Rastatt | spek DESIGN, Stuttgart







Rolls



Rolls



Tiger



Shark 10



Shark 20



Torpedo

Tiger



S100



S100



Flash

MX



MX 200



MX 300



TX 5



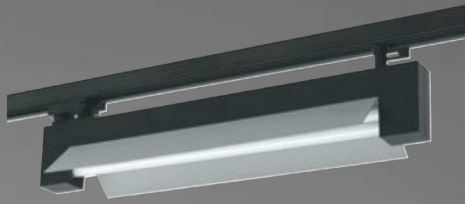
SX



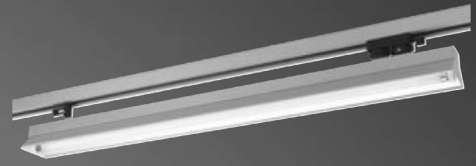
SX 323



MX 500



Track-Flut



Track-Flut



Projekt: bulthaup



Projekt: Lerros Showroom; Realisation: Konrad Knoblauch GmbH, Markdorf



Sehr geringe Einbautiefe: 65 mm
Very low recess depth: 65 mm

CSAF 40



∅ 134 mm

CSA 600



CSA 500





CSA 80



Ø 186 mm

CSA 85



Ø 146 mm

CSA 90



ROL 60



Ø 192 mm

ROL 50



Hero 40



Vario



Scene® 2
Kombi-Einbauleuchte



Vario Professional



◇ 289 × 151 mm

Scene® 1



Scene® 2



Scene® 33



Scene® Deluxe



Scene® 6

◇ 381 × 200 mm









CSA 400



CSA 500



CSA 600



CSA 650

Ø 134 mm



Scene® 6



TRI 2



TRI 3.700 R



TRI 3/4

Ø 166 mm



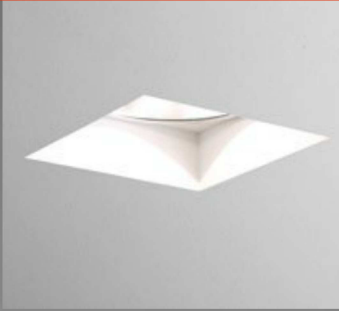
◇ 285 × 156 mm

CSA 90

CSA 92

SCT 200

SCT 200



◇ 166 × 166 mm

TRI 3.700 Q

TRI 3

TRR 2

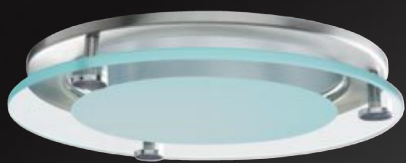
TRR 100



Projekt: La Prairie, Airstide Zürich



Projekt: Konrad Knoblauch GmbH, Markdorf



Edel + Stahl



∅ 230/263 mm

Edel + Stahl
4-zelliger Raster 4-cell louvre



Edel + Stahl
VR6-Raster VR6 louvre




Edel + Stahl
PRI-Reflektor



Edel + Stahl
Acryl mit 4-zelligem Raster
acrylic design with 4-cell louvre



∅ 197/230/263 mm

Edel + Stahl
Acryl-Optik acrylic design



Edel + Stahl



Edel + Stahl
gelb yellow



Edel + Stahl
rot red



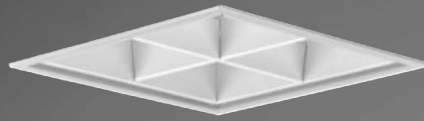
Edel + Stahl
blau blue

QP



QP

Glas teilmattiert, vorgesetzt
Glass partly frosted, attached

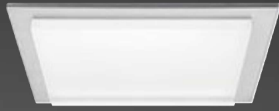


QP

4-zelliger Raster 4-cell louvre



Quadro-Downlight



Piazza 200 auch in Edelstahl
Piazza 200 also in stainless steel



Piazza 324



Concept XL

Piazza



⌀ 370/460/660/1000 mm

PL 25 Einbau recess



PL 22 Aufbau surface-mounted



PL 50



◇ 310 × 310 mm
620 × 620 mm

Rixos



PL 20



Concept X 200



Milano XL

Roccy





Superior 400

Superior 410



Leuchte luminaire \varnothing 420 mm
Schirm screen \varnothing 600 mm

Superior 490





Capone 100



Capone 200
Masterreflektor master reflector



Capone 200



CAP 50



CAP 90



CAP



Capone





∅ 181 mm

Poox 510



Poox 200



Poox 100



Hero 31



∅ 160 mm

Rolls



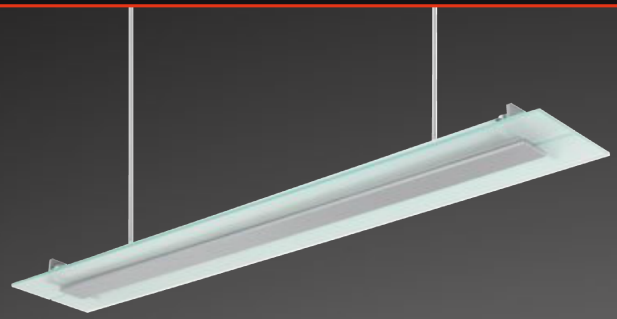
Space



Scene® Power-Pendel
Scene® Power Luminaire



Milano XL



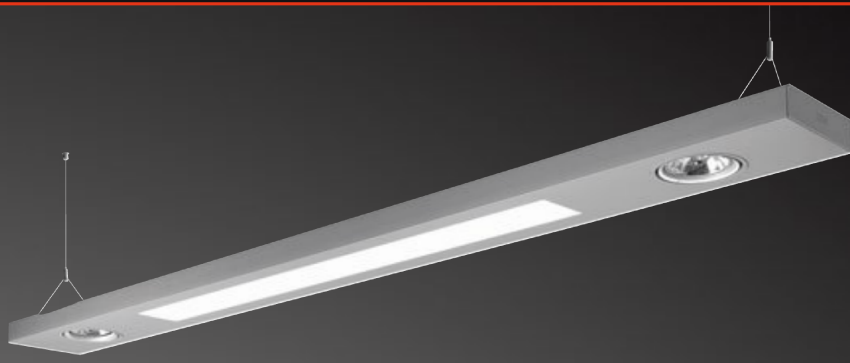
Roma XL



Scala



Modena

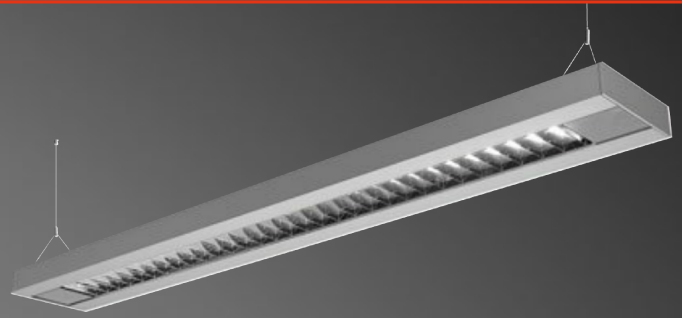


LIPA



◇ 1290/1590 × 176 mm × 46 mm
(L × B × H)

Milano 600
Acryl acrylic



Milano 600
Spiegelraster specular louvre







∅ 200 mm

CA 62



CA 65



∅ 140 mm

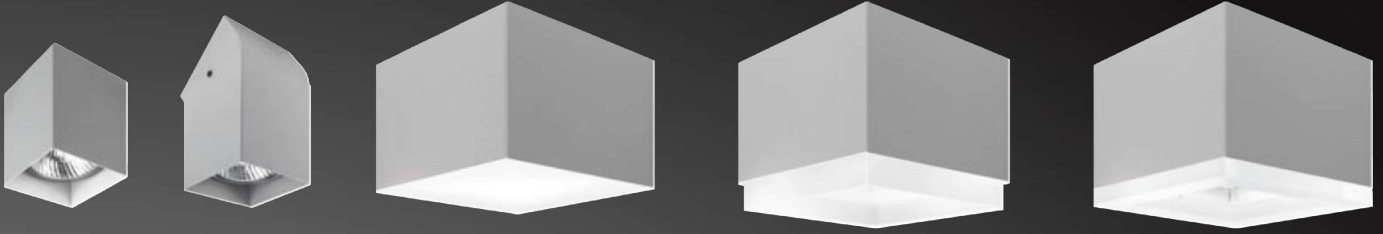
CA 50



Piazza 351



Piazza 621



XP 100

XP 150

XP 210

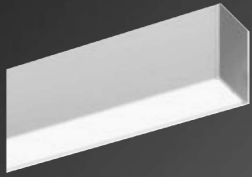
XP 230

◇ 210 × 210 mm
XP 220



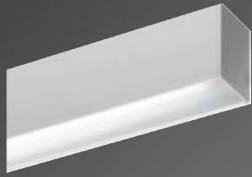
XP

Lichtkanal



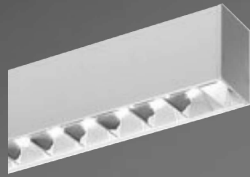
Lichtkanal

Acryl
acrylic



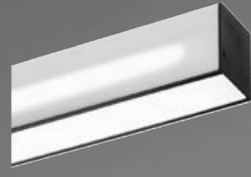
Lichtkanal

Prismenabdeckung
prismatic diffuser



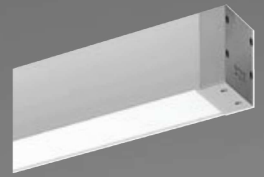
Lichtkanal

Spiegelraster
specular louvre



Lichtkanal

mit Acryldekor
with acrylic decor



Lichtkanal

IP54



Lichtkanal

mit Rand | in Gipskarton
recess with trim | in plasterboard

Lichtkanal

Trimless | in Gipskarton
recess Trimless | in plasterboard

Lichtkanal

mit Rand | in Sichtbeton
recess with trim | in fairfaced
concrete

Lichtkanal

Trimless | in Sichtbeton
recess trimless | in fairfaced
concrete

Lichtkanal

mit Rand | in Beton mit Putz
recess with trim | in concrete
with plaster



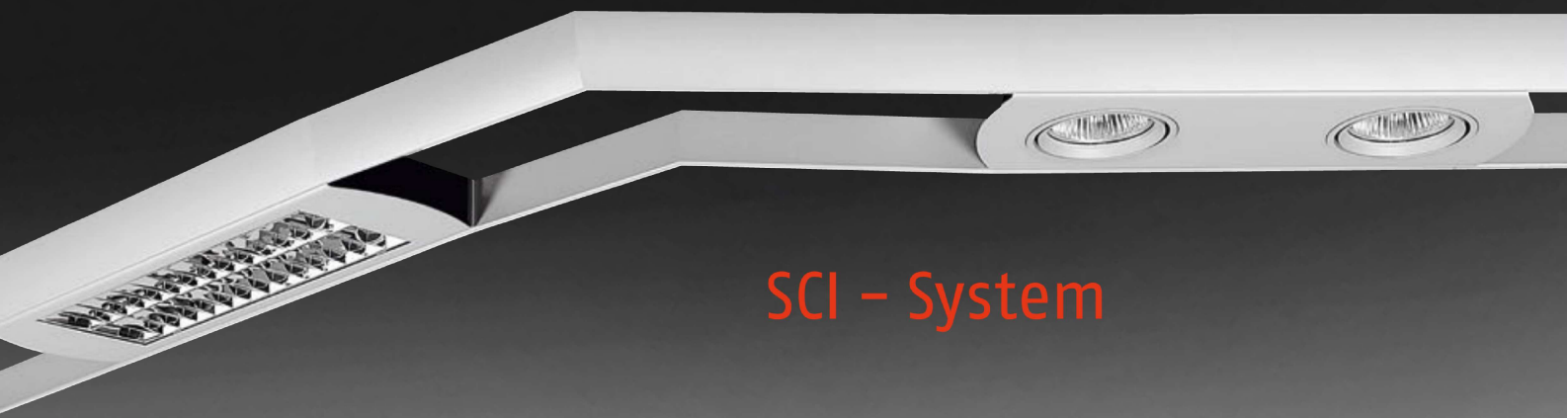
Lichtkanal



Projekt: Tiergartenapotheke
Architektur, Fotos: f m b architekten



Projekt: University of Leicester
Architekt: Associated Architects, Birmingham
Fotograf: Martine Hamilton Knight



SCI – System



Como



SCS-System



SCS-System